

How to Resize Your Photos

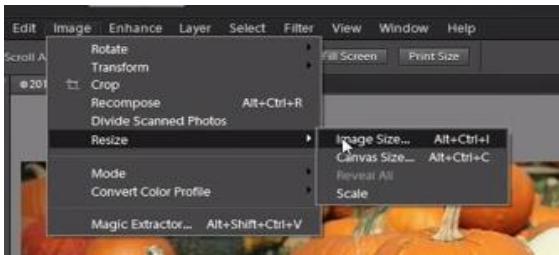
By Dawn Dingee

There are many ways to resize your photos which vary based on what operating system and program you are using. Below are 4 options for resizing your photos in some commonly used programs. If one of these don't work for you because you use a different software, let us know and we will provide information specific to the software you use! For others, I hope this provides the steps in an easy, simple way so you can resize your photos for competitions.

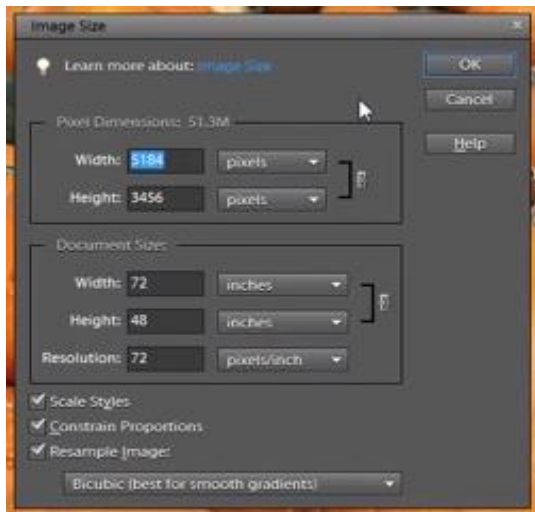
Adobe Photoshop Elements

Step 1: Open photo in Adobe Photoshop Elements

Step 2: Click Image, then Resize, then Image Resize



Step 3: Update the width and size and click OK



** For **landscape** photos, update Width to 1400 and allow the height to adjust automatically

** For **portrait** photos, update the Height to 1050 and let the width adjust automatically

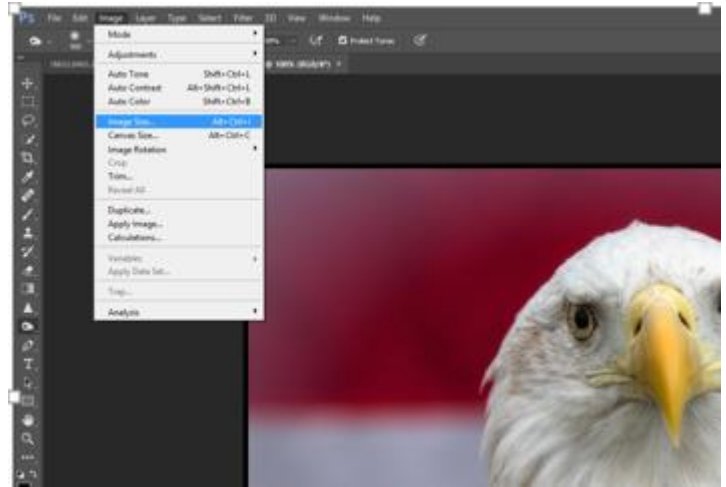
NOTE: Make sure "Scale Styles" and "Constraint Proportions" is checked so your photo scales proportionally as you change the size

For best results, set bottom drop-down to "Bicubic Sharper (best for reduction)"

Adobe Photoshop

Step 1: Open photo in Adobe Photoshop

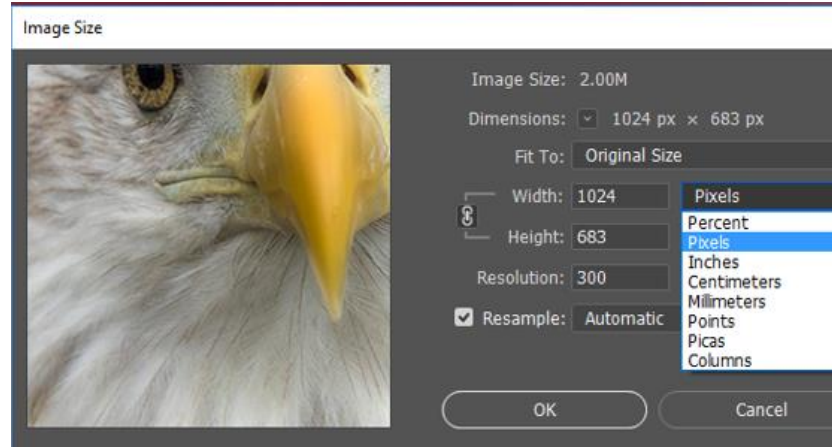
Step 2: Click Image, then Image Size



Step 3: Select "Pixels" for size type and then update Width and Height and then click OK.

** For landscape photos, update Width to 1400 and allow the height to adjust automatically

** For portrait photos, update the Height to 1050 and let the width adjust automatically



That's it – 3 easy steps!

Pixel - unit of measure for digital images.

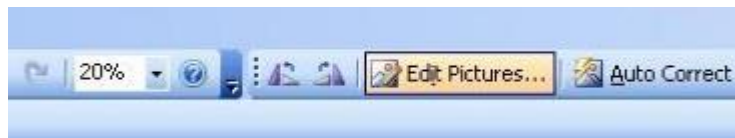
For competitions, photos must be sized 1400 X 1050 pixels.

*A pixel is a small square of color information. It is advisable to not allow the software to **increase** the number of pixels although the software can do that; because the software will make up content and you won't get the best results. So never go higher than your starting pixel count on width or height.*

Microsoft Office Picture Manager

Step 1: Open the photo in Microsoft Office Picture Manager

Step 2: Click 'Edit Pictures...' button



Step 3: On the right side window, half-way down, click "Resize"

Step 4: Update the width to 1400 – you will see the height will adjust proportionally. If you are sizing a portrait photo, it is best to input the height to 1050 and allow the program to adjust the width.



Step 5: Click OK to save changes.

Which color space to use?

Adobe RGB is irrelevant for real photography. **sRGB** gives better (more consistent) results and the same, or brighter, colors. Using **Adobe RGB** is one of the leading causes of colors not matching between monitor and print. **sRGB** is the world's default color space.

Lightroom

Lightroom is a little different than the other programs because Lightroom doesn't actually have a "resize" option. To resize a photo, you actually export a copy of the image to a new size.

Step 1: Open photo in Lightroom

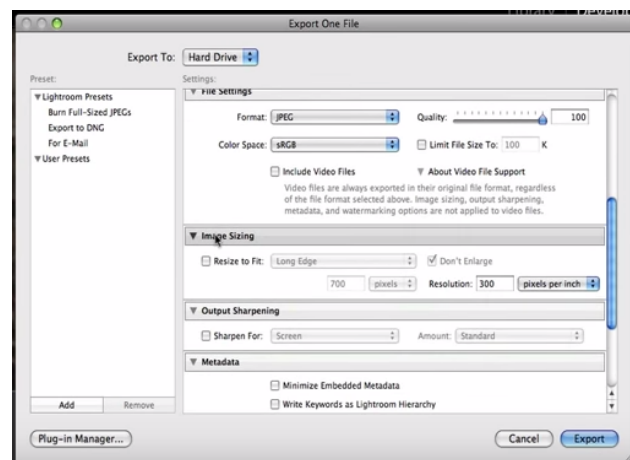
Step 2: Go to File, then Export



Step 3: Choose file type as JPEG if that is not the default.

Step 4: Select Color Space sRGB.

Step 5: In the Image Resizing section, choose "Width and Height" from the "Resize to Fit drop-down.



Step 6: Input width 1400 and height should adjust automatically.

Step 7: Click export.